

se@WEATHER

se@WEATHER from Telaurus and AWT is an icon-driven graphical marine weather analysis system that utilizes the same intuitive, easy to use interface as AWT’s full BVS marine voyage optimization system.

se@WEATHER provides instant access to the most accurate and enhanced global weather with sea condition data, including surface pressure, wind direction, significant wave heights, fronts, and tropical storms. The data is delivered in a highly compressed format to minimize communication cost. This data generates sophisticated colour-enhanced graphics which allow the Master to easily view and interpret weather and sea conditions.

se@WEATHER Features

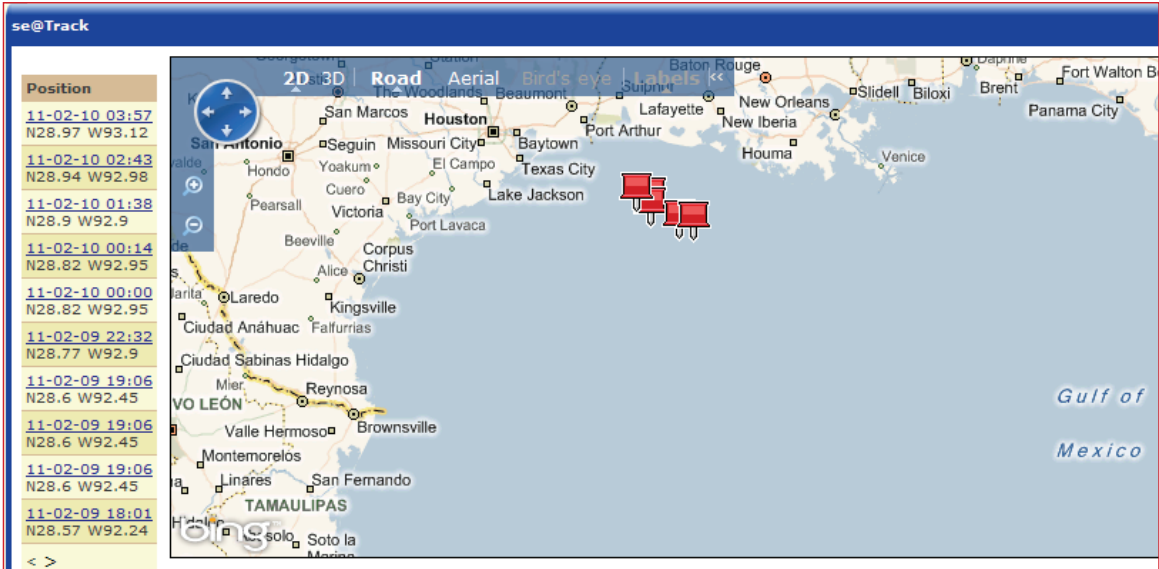
- Data from a variety of public and private sources is integrated and enhanced to provide industry leading clarity and accuracy.
- Simple graphical controls and icons enable users to quickly and easily display specific information and locations of interest.
- Weather and sea condition data are available up to 4 times per day.
- Maps can be viewed as Mercator, Gnomonic, Plate Carrée, or Orthographic projections.
- se@WEATHER can be upgraded to AWT’s full BVS marine voyage optimization system on request.

se@COMM SMS

Vessel and private crew accounts alike now have the ability to send and receive SMS messages. se@COMM SMS is a great inexpensive way to communicate with friends and family. The transmission costs for private crew accounts are deducted from the user’s se@COMM balance (funded with se@CARDS or a major credit card).

se@TRACK

se@COMM now comes with a built in feature that allows subscribers to automatically log a vessel’s GPS coordinates at a predetermined time interval. The position data is stored locally and unsent data is automatically transmitted every time se@COMM connects to send or receive an email. This data is then logged automatically in Telaurus’ online Ship Management Tool SMT. Using SMT, the vessel Owner or Management Company can view a graphical representation of the vessel’s course plotted on an interactive world map. Users can perform several functions on the map including zooming, recalling and viewing past GPS data, and more.



About Globecomm Maritime

Globecomm Maritime has been created to combine the maritime offerings of Globecomm's four well-known maritime business units – Telaurus, Mach6, Evosat and Carrier2Carrier.

Four well-established companies come together under the Globecomm Maritime brand.

- Telaurus Communications: an Inmarsat Gold Service Provider (SP) and Tier-1 Iridium OpenPort Service Provider (SP)
- Evosat: a Tier-1 Inmarsat Distribution Partner
- Mach6: a Global managed VSAT services provider
- Carrier2Carrier: a Teleport Owner and Operator

Globecomm provides ships at sea and in port with a range of advanced, reliable and cost-effective maritime communications options ranging from voice and email connections up to full integration into broadband enterprise networks.

**Globecomm Maritime
brings new maritime
communications technology
to mariners who need
advanced, reliable
telecommunications systems
and services for a wide range
of maritime applications**



Globecomm

45 Oser Avenue
Hauppauge, NY 11788-3816
USA
Tel: +1-631-231-9800
Fax: +1-631-231-1557
Email: info@globecomm.com

NASDAQ: GCOM

www.globecomm.com